

11/11/2019 11:11 AM

Journal of Management Inquiry 20(6) 798–814
© The Author(s) 2011
Reprints and permissions:
<http://www.sagepub.com/journalsPermissions.nav>



Floating package dashboards means that the reports will pack together to the most compressed presentation depending on the current size of the browser window, combined with powerful drill-down from any of the reports, giving end-users new and fast ways to present and analyze results.

Preview Drill-down

It is now possible to drill-down in the Preview pane of Design, allowing the designer of the report to investigate the underlying groupings as well as the flow of the drill-down during report design.

Be aware that conditions or selected filters are not having impact on the drill-down. The drill-down are solely included to preview the structure of the report.

Custom Graph template creation

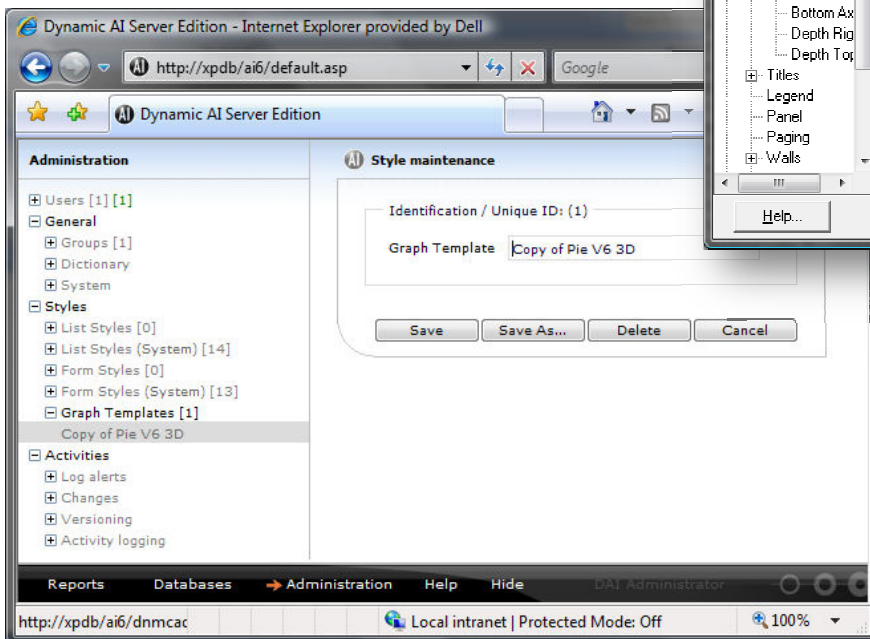
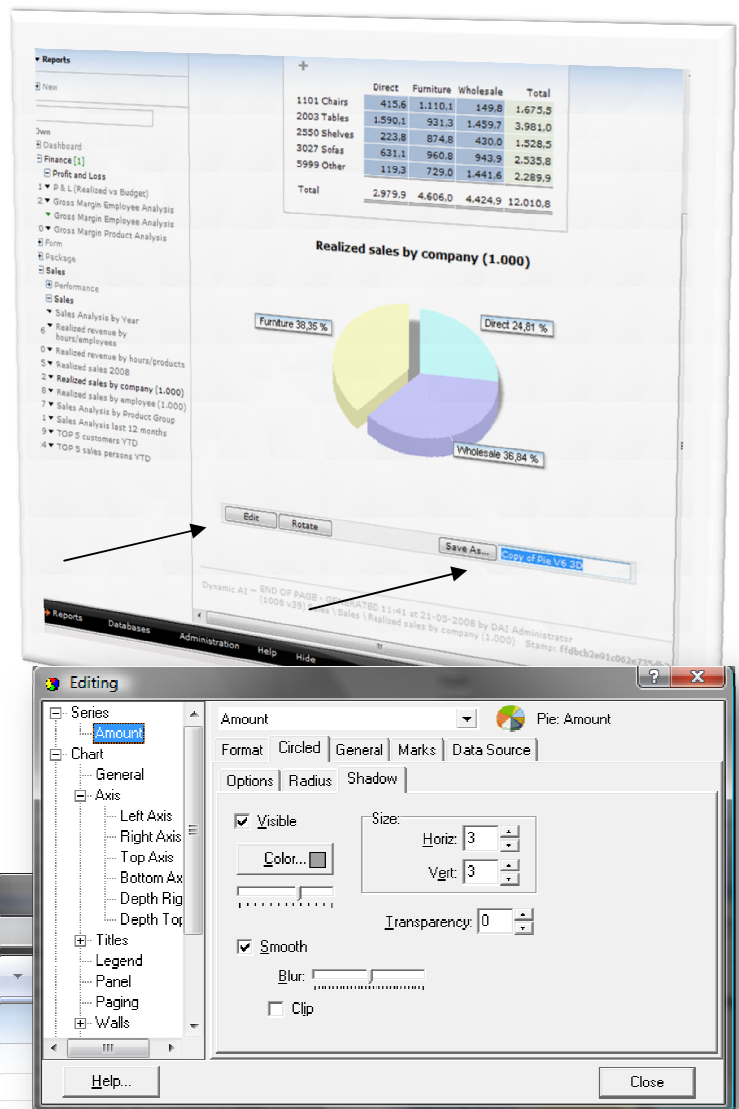
In Dynamic AI Server and Enterprise editions it is now possible to create custom graph templates (requires Internet Explorer because Active X component is being used).

In order to create new templates, the user must have Style maintenance rights as well as the Active X presentation of Graphs must be set (both on the user account in user maintenance).

When running a report with a graph, on mouse-over the graph, Edit and Save buttons will appear.

It is now possible to change the existing graph template and either save as new or overwrite an already saved custom template.



From Administration it is possible to rename and remove custom templates.








Easy use of Dynamic AI reports from external applications

To ease the setup of reports in external applications Dynamic AI version 6.1 now includes a detailed description of filters and parameters as well as the full URL to be used for integrating reports into external applications.

The integration information is part of Report Documentation found under the Tools menu in Server and Enterprise editions of Dynamic AI:



Dynamic AI - Report Documentation



Integrate information:

Use below information to integrate this report into external content. Reports and forms can either be accessed using the URL syntax (which however will expose the variables into the address field of the browser, or by using the FORM POST method (example below).

URL `http://xpdb/ai6/ai.asp?UID=userid&PW=password&DAI_R=1020`

Filters	As filter Column (optional)	As hidden filter (forced)
	Dte <code>&DAI_S_DTE_FNC_201=<i>INTEGER_variable</i></code>	<code>&DAI_P_DTE_FNC_201=<i>INTEGER_variable</i></code>

Sample URL with filters `http://xpdb/ai6/ai.asp?UID=&PW=&DAI_R=1020`

(NB: A valid UserID (UID) and password (PW) must be included in the URL before it is functional!)

Sample Autoload Form

```
<HTML>
<BODY onload='BB.submit();'>
<FORM NAME=BB METHOD=POST ACTION="http://xpdb/ai6/ai.asp">
<INPUT TYPE=HIDDEN NAME="UID" VALUE="">
<INPUT TYPE=HIDDEN NAME="PW" VALUE="">
<INPUT TYPE=HIDDEN NAME="DAI_R" VALUE="1020">
</FORM>
</BODY>
</HTML>
```

(NB: A valid UserID (UID) and password (PW) must be included on the saved form!)

Use the FORM alternative (saved to a HTML document) to avoid that parameters will be visible in the URL at execution.

Optional
Use single Frame only

include: `&SFRAME=Y` in URL or
include: `<INPUT TYPE=HIDDEN NAME="SFRAME" VALUE="Y">` on form.

Return Dynamic AI Reports in a single framed version. I.e. drilldown will be within the same frame, SFRAME=N (default, if no SFRAME parameter is specified) Will return the Report in a framework allowing drilldown in a 2nd frame and Form presentation in a 3rd frame.

Optional
Overwrite LIST style

include: `&LISTSTYLE=1234567` in URL or
include: `<INPUT TYPE=HIDDEN NAME="LISTSTYLE" VALUE="1234567">` on form.

Will overwrite the defined List style. Use this option to uniform Dynamic AI Reports to styles used in the external applications. The style number must be a valid style number within Dynamic AI.

Optional
Overwrite FORM style

include: `&FORMSTYLE=1234567` in URL or
include: `<INPUT TYPE=HIDDEN NAME="FORMSTYLE" VALUE="1234567">` on form.

Will overwrite the defined Form style. Use this option to uniform Dynamic AI Forms to styles used in the external applications. The style number must be a valid style number within Dynamic AI.

Optional
Outputformat
CSV

`&DEVICE=CSV`

The Report is returned in CSV format – as a "stream" to the requesting client browser or service.

Optional `&DEVICE=XML`

Various Bug fixes and minor improvements

- 20080404 Fixed width on list caption to keep the toolbar steady
- 20080406 Bug on required filter
- 20080406 Added new field type to handle double byte characters (e.g. Russian)
- 20080408 Handling no connection specified
- 20080408 Removing a label from form generate error in 'List' tab
- 20080423 Include selected filter values on PDF /export PDF cut list and parameters are missing

20080424 Added handling of illegal filename characters in mail attachments
 20080428 IE6 enable/disable ad-hoc radio buttons
 20080504 Styling on AVG,MIN, MAX etc. in list style sheets (.XR1E1 etc.)
 20080508 DB2 small / big caps issue in captions
 20080509 Added to allow design owners to save views and connections without being part of user group
 20080412 Bug ' in data for select combo's - data pling i.e. table's
 20080413 Flash yes/no (optional on user account whether or not Dynamic AI Flash contents is allowed)
 20080413 Keep Own/Common setting in navigation during delete
 20080416 Listedit - Bug safari double keystrokes

Specific to Personal / Desktop editions:

QuickWeb Service based installation

Version 6.1 of Dynamic AI Personal and Desktop Editions are now shipping with a version of Quickweb server that runs as a service. This means that response times and launch of Dynamic AI are even speedier.

Quickweb Server is a low footprint web server that enables computers without Internet Information Services (Windows XP Home, Windows Vista Home Basic, Windows Vista Home Premium and those cases where users or administrators just do not want IIS). Previous versions of Dynamic AI Personal and Desktop have shipped with an executable version of Quickweb.

iPhone/iPod access

Personal and Desktop Dynamic AI installations now also allow iPhone/iPod access with a password set on the user profile.

